



Main Characteristics

Length Overall	240 ft	(28.04 m)
Beam	56 ft	(7.93 m)
Operating Draft	15 ft	(4.74 m)
Light Draft	7 ft	(2.13 m)
Deadweight Tonnage	2,669 LT	2,712 MT
Gross Tonnage	1,471	

Capacities

Clear Deck Space	165 ft x 46 ft	(50.29m x14 m)
Deck Cargo	1,300 LT @ 3'VCG	(1,320.86 MT)
Fuel Oil	169,956 gal	(63.78 m ³)
Ballast	432,607 gal	(138.91 m ³)
Potable Water	36,696 gal	(138.91 m ³)
Dry Bulk	6,320 cu. ft @ 80psi	178.96 @ 5.5bars

Performance

Top Speed	10 knots
Fuel Consumption	10 knots @ 133gph
On DP	47gph

Propulsion

Main Engines	(2) 3516 CAT
Total Horsepower	3200 bhp
Main Propulsion	(2) Ulstein 1350 HP
Bow Thrusters	(1) CP Tunnel 340HP (1) Retractable Azimuthing 1,200 HP

Special Features

DP2	
Ship Motion	(2) Passive Type Anti-Roll Tanks, Bilge Keels
	(2) 4 Ton Tugger Winches
	30 MT A-Frame

Dynamic Positioning System (Class II)

Marine Technologies ABS Classed DP-2
2 x Bridgmate Operator Stations
2 x Kongsberg Independent Backup Joysticks

Accommodations

Accommodations for 30 people composed of
2 x 1 man cabins
6 x 2 man cabins
4 x 4 man cabins
Crew 9
Guests 21
Fully Airconditioned and Heated

Electronics

(2) Furuno FAR series ARPA Radar
Furuno FE 6001 Sounder
Furuno A3 GMDSS console
(3) R.M. Young Wind Sensors
(2) DGPS Navigation Systems
MDL Fanbeam
(3) Meridian Gyro Repeaters
FB250 Satellite Phone
Sailor VSAT Three
(3) MRU

Generators

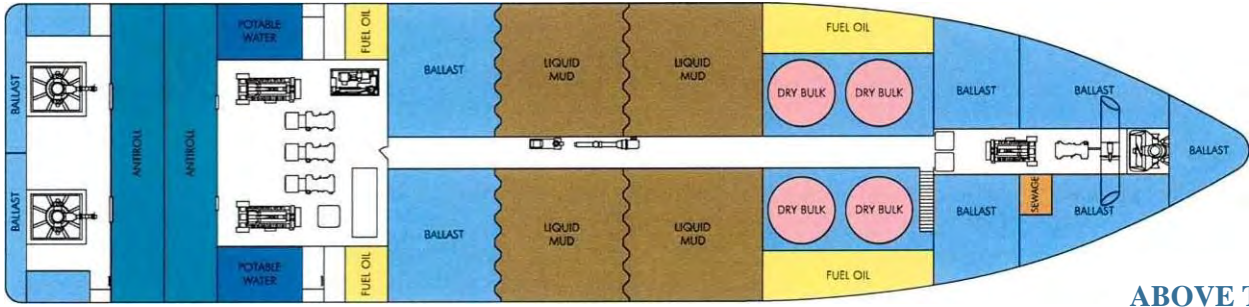
Generator MFG	(3) Caterpillar 3406
Volts Each	480
K.W.	(2) 300kW
	1 x 99kW Caterpillar Emergency Generator

Life Saving Equipment

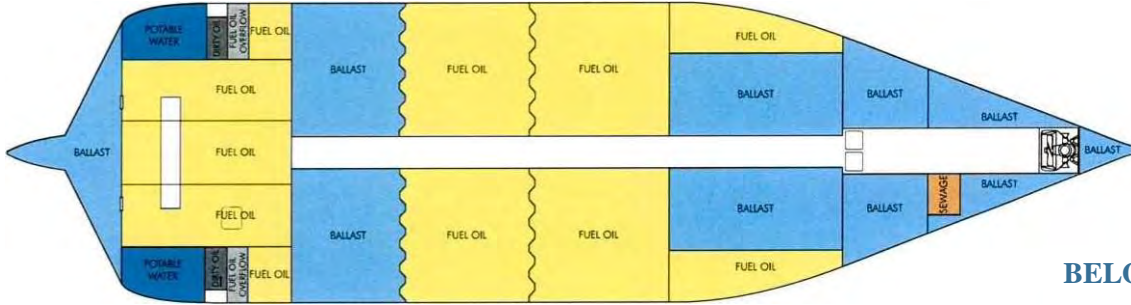
4 x 25 Man Life Rafts
Life Boat
S.A.R.T.

Classification

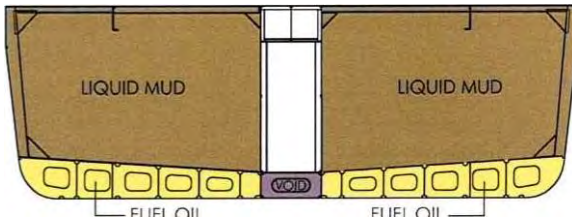
Subchapter	L & I
Flag	U.S.A.
ABS	Star All Oceans - Unrestricted
ABS	Circle E



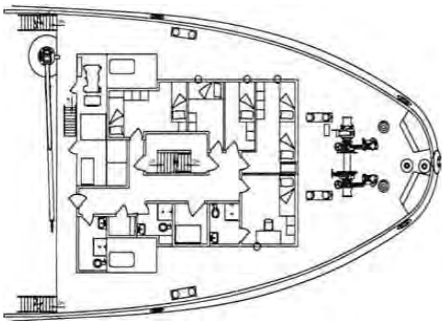
ABOVE TANK TOP



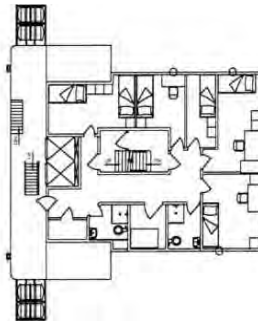
BELOW TANK TOP



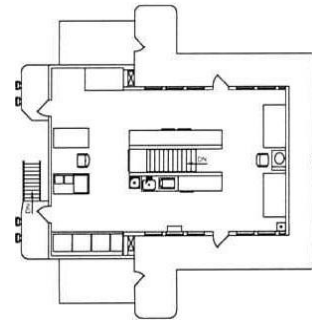
CROSS SECTION



DECK 01



DECK 02



DECK 03

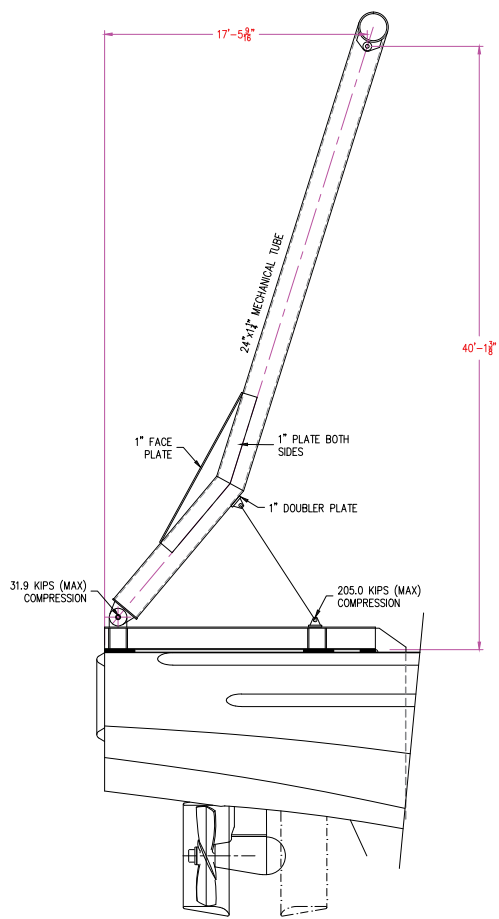
8 7 6 5 4 3 2 1

D

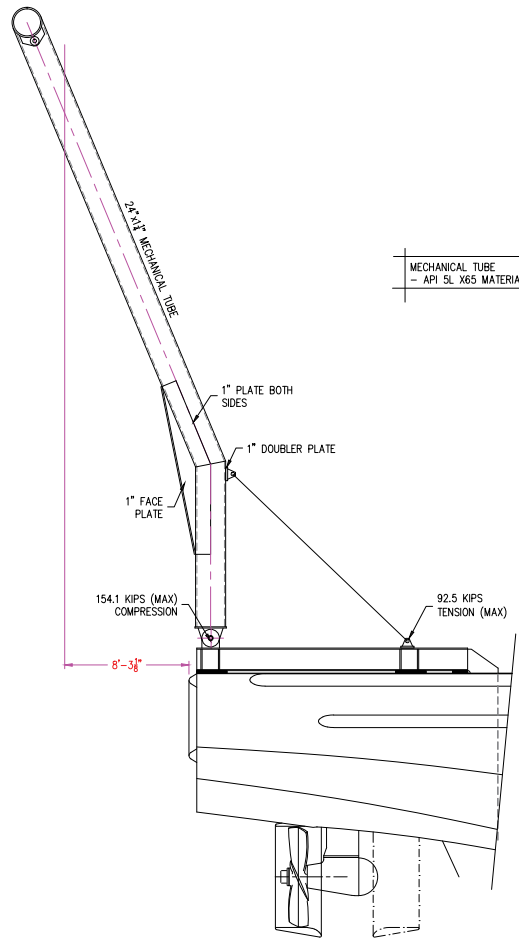
C

B

A

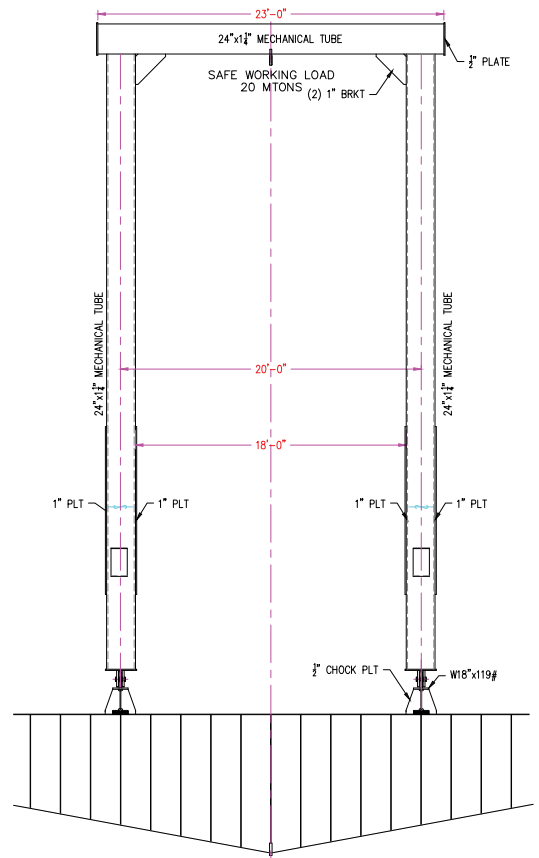


A-FRAME - INBOARD POSITION

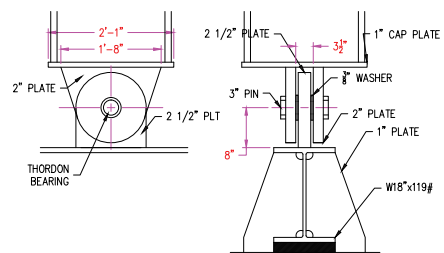


A-FRAME - OUTBOARD POSITION

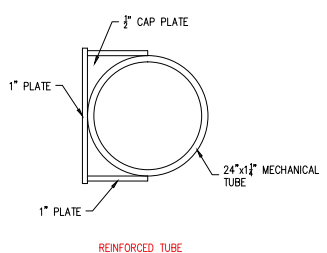
MECHANICAL TUBE
- API 5L X65 MATERIAL



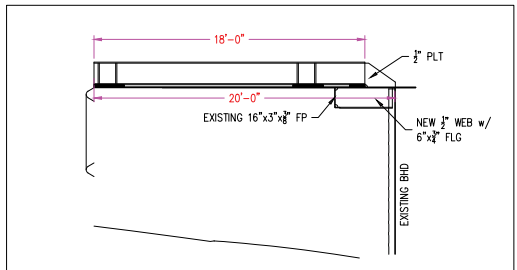
A-FRAME - SECTION VIEW



A-FRAME CONNECTION DETAILS



REINFORCED TUBE DETAILS



BELOW DECK MODIFICATIONS

COPYRIGHT (C) 2019 FARRELL AND NORTON NAVAL ARCHITECTS

1	- AS BUILT REVISIONS	11/11/19
ALT	REVISION	DATE
THIS DRAWING/DOCUMENT IS CONFIDENTIAL AND THE PROPERTY OF THOMAS W. FARRELL AND GARRETT NORTON AND MUST NOT BE USED FOR MANUFACTURE, COPIED OR COMMUNICATED TO ANY OTHER PERSON WITHOUT EXPRESS PERMISSION.		
FARRELL & NORTON NAVAL ARCHITECTS		
NAVAL ARCHITECTS AND MARINE ENGINEERS		
PO BOX 66 (207) 563-3210 (THOMAS)		NEWCASTLE, ME 04553 (617) 308-1074 (GARRETT)
A-FRAME STRUCTURE		
PROJECT: M/V COMMANDER		
DRAWN BY: TMF	DATE: 06/25/19	
APPROVED BY: G.J.N	SCALE: 1/4" = 1'-0"	
DWG #: C-663-100	ALT: 1	

8 7 6 5 4 3 2 1