



NORTHSTAR NAVIGATOR

Main Characteristics

Length Overall	265 ft	(80.8 m)
Beam	51.8 ft	(15.8 m)
Depth	19 ft	(4.74 m)
Loaded Draft	15.4 ft	(2.13 m)
Deadweight Tonnage	2,446 LT	2,712 MT
Gross Tonnage (ITC)	2,540	
Net Tonnage (ITC)	790	

Cargo Deck

Clear Deck Space	141.7 ft x 41 ft	
Tonnage	1,600.3 LT	(1,626.0 MT)
Strength	1,024.1 Lb/ft ²	(5.0 MT/m ²)
Clear Area	5,882.5 ft ²	(546.5 m ²)

Performance

Top Speed	14 knots
Cruising Speed	12 knots
Economical Speed	10 knots
Bollard Pull	120 MT

Fuel Consumption

Fuel Monitoring System	Yes
Top Speed	380.7 USG/hr
Cruising Speed	122.4 USG/hr
Economical Speed	97.1 USG/hr

Machinery

Main Engines	Caterpillar (4) 3516C
Main Generators	(4) 2,250 kW, 690 V, 60 Hz, 3 ∅
Aux Generators	(1) 425 kW, 480 V, 60 Hz, 3 ∅
Total Installed Power	12,639 HP / 9,425 kW
Emergency Generator	1 x 175 kW, 480 V, 60 Hz, 3 ∅
Bow Thruster #1	Brunvoll CPP, 800 BHP, 9 MT thrust
Bow Thruster #2	Brunvoll CPP, 800 BHP, 9 MT thrust
Stern Thruster #1	Brunvoll CPP, 800 BHP, 9 MT thrust
Stern Thruster #2	Brunvoll CPP, 800 BHP, 9 MT thrust

Accommodations

Cabins	18	Offices	1
Berths	43	Change Room	1
Special Personnel	22	Lounges	1
Single Cabins	8	Hospital	1
Double Cabins	6	Crew Mess	1
4 Person Cabins	6		

Electronics & Controls

Dynamic Positioning	Class 2
DP System	GE/ Convertteam
DP Reference #1	3 x C-NAV 3050
DP Reference #2	Multi Target Laser Based Positioning
DP Reference #3	Sonardyne Ranger (Fusion)
Gyros	3 x TSS Meridian
ECDIS	Coastal Navigator
Radar #1	Furuno S Band
Radar #2	Furuno X Band
GMDSS	Area A3

AIS	Iridium IOP
Navtex	VSAT Broadband
Depth Sounder	

Capacities

Fuel Oil	139,266 USG	(527m ³)
Potable Water	100,121 USG	(379m ³)
Drill Water	211,258 USG	(800m ³)
Water Ballast	211,258 USG	(800m ³)
Liquid Mud	277,117 USG	(1,049m ³)
Dry Bulk	7,487 ft ³	(212m ³)
Brine	98,536 USG	(373m ³)
LFL/ Methanol	98,536 USG	(373m ³)
Dispersant	4,597 USG	(17m ³)

Discharge Rates

Fuel Oil	26,417 USG/hr	(100m ³ /hr)
Potable Water	26,417 USG/hr	(100m ³ /hr)
Drill Water	26,417 USG/hr	(100m ³ /hr)
Water Ballast	26,417 USG/hr	(100m ³ /hr)
Liquid Mud	59,967 USG/hr	(227m ³ /hr)
Dry Bulk	1,497 ft ³ /min	(42m ³ /hr)
LFL/ Methanol	19,813 USG/hr	(75m ³ /hr)



NORTHSTAR
MARINE SERVICES • EST. 1990

northstarmarineinc.com

NORTHSTAR NAVIGATOR

Deck and Anchor Handling

Anchors	(2) 1,846 Kg
Chain	439 m x 38 mm Ø
Chain Capacity	10,594 ft3-300 m3
Winch Model	Rolls Royce Brattvaag, Electro-Hydraulic
Line Pull	Two Drum Reverse Waterfall/295 LT 300 MT
Winch Capacity Drum #1	76mm x 2,000 m, (3" x 6,600')
Winch Capacity Drum #2	76mm x 2,000 m, (3" x 6,600')
Brake Capacity	393 LT, 400 MT
Storage Reel #1	76 mm x 2,000 m, (3" x 6,600') ea. drum
Storage Reel #2	76 mm x 2,000 m, (3" x 6,600') ea. Drum
Tugger Winch #1	11 MT
Tugger Winch #2	11 MT
Stern Roller	SWL 350 MT (16' x 8')
Shark Jaws	(2) Karmfork, 295 Lt, 300 Mt
Towing Pins	2 Pair x Karmoy hyd w/ locking flaps

Rescue Capabilities

FRC #1
MP660 Springer, Full SOLAS 6.6 m, 6 person , 32-34 kt max speed,
Diesel waterjet, self righting

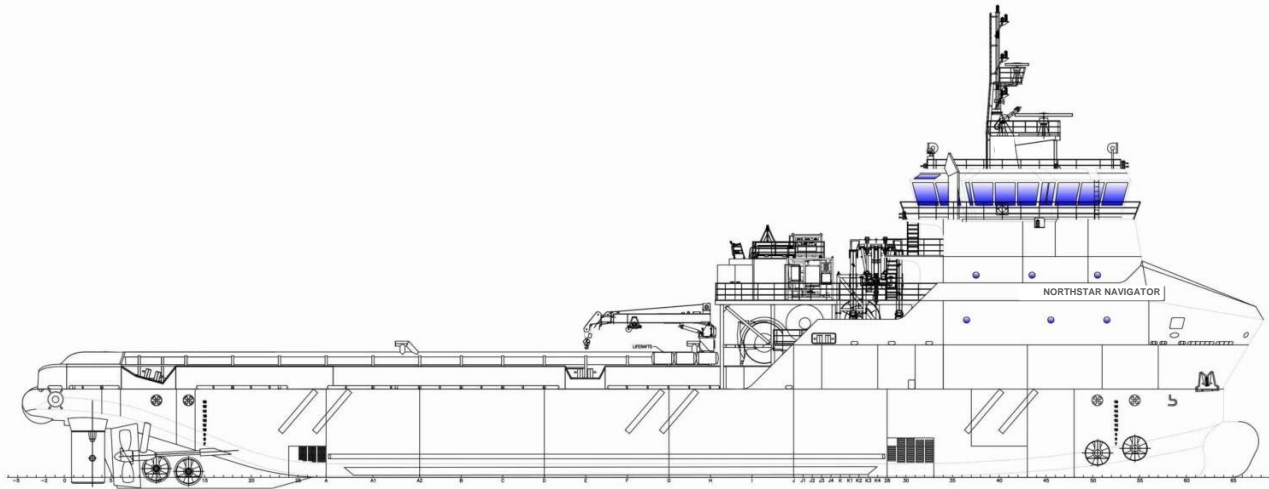
Documentation

Class	ABS A1, Towing Vessel, Fire Fighting Vessel Class 1, Offshore Support Vessel, AMS, ACCU, DPS-2, UWILD
Class ID	12230766
Flag	U.S.A.
Official Number	1205366
IMO	9407809
Call Sign	WDG3786
MMSI Number	366766000
Build Year	2012
Builder	Eastern Shipbuilding Group Inc
Hull Number	167

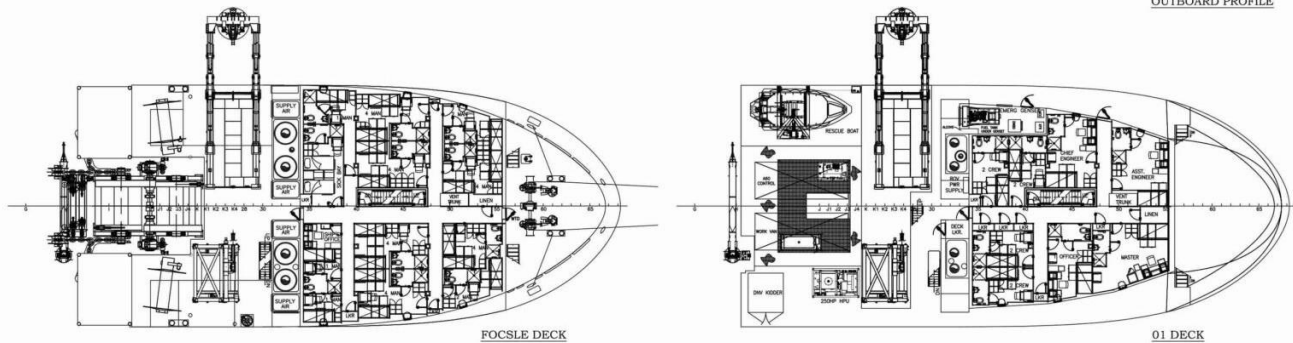
Special Equipment

Fire Monitors	
Deluge System	
Foam Fire Fighting	(2) 1,1810 m ³ /hr
Survival Craft	(6) 25 person inflatable life rafts
Stability Computer	
Mud Tank Circulation	Flygt Agitators (2) per tank
Nitrogen Inerting	For Methanol Tank Inerting
Oil Dispersant	8m Arms P&S, For application of concentrated or dilute dispersant from 8m spray arms PT or STBD
Water Maker	10MT/ day
ROV Capabilities	Oceaneering-Millennium Plus ROV (220 HP) Spread
ROV Power Supply	800A & 660A from Main SWBD
Container Supply	4 x 480 V, 63A, 3Ø & 4 x 220 V

NORTHSTAR NAVIGATOR

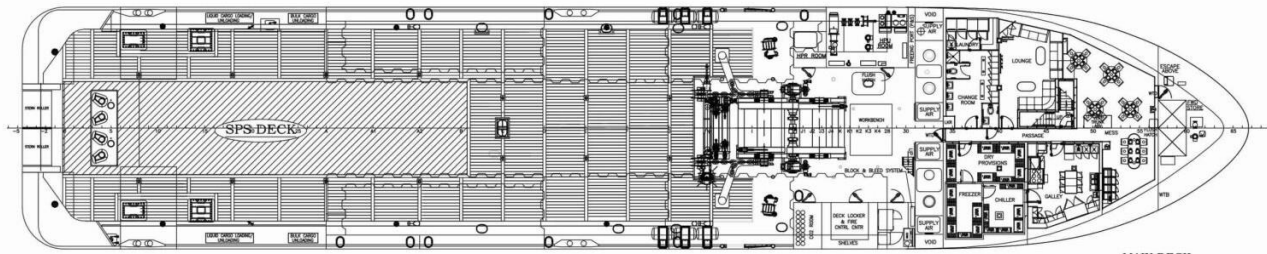


OUTBOARD PROFILE

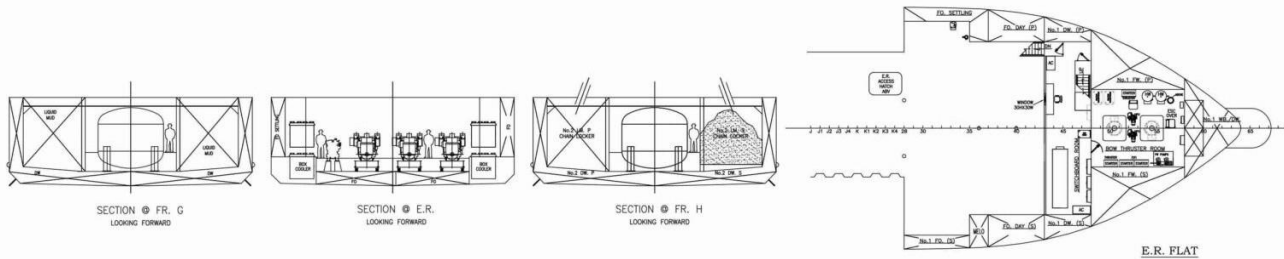


FOCSLE DECK

01 DECK



MAIN DECK

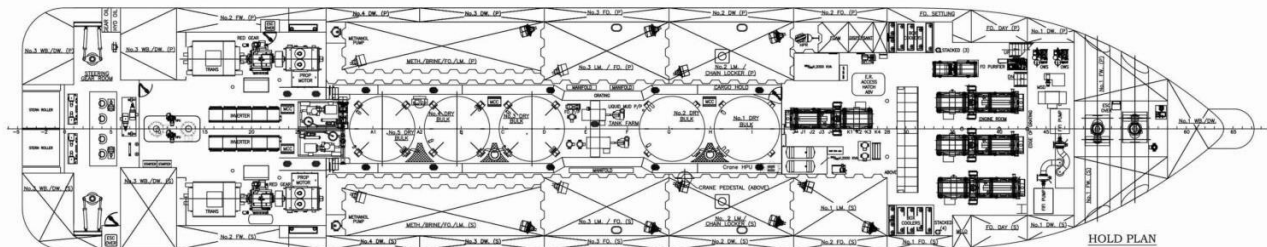


SECTION @ FR. G
LOOKING FORWARD

SECTION @ E.R.
LOOKING FORWARD

SECTION @ FR. H
LOOKING FORWARD

E.R. FLAT



HOLD PLAN